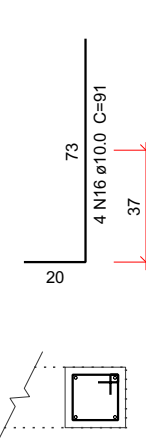
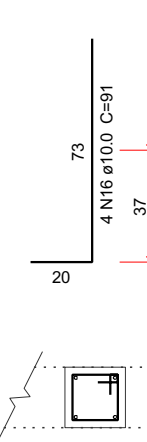
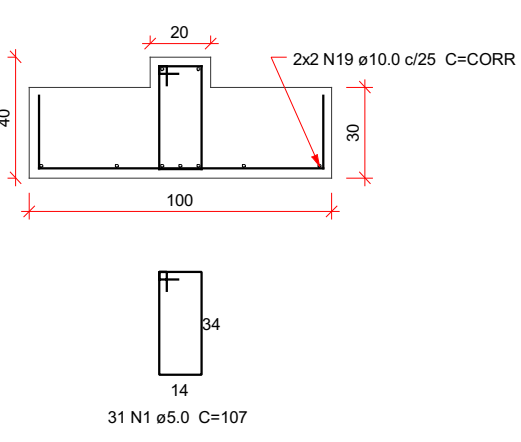
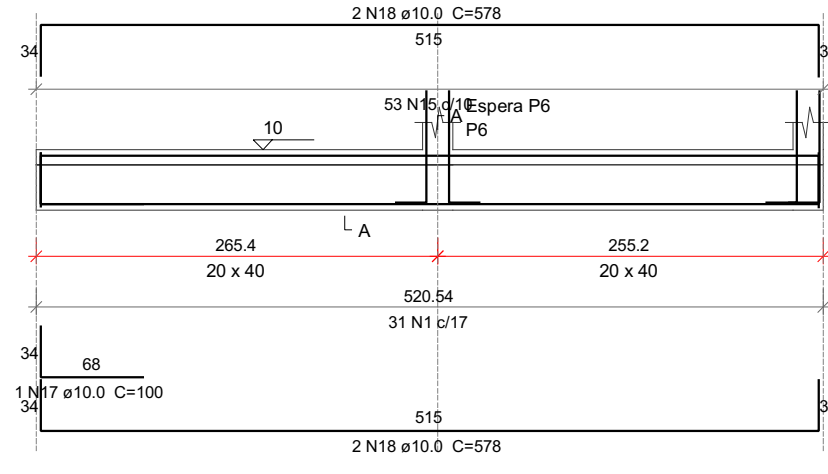
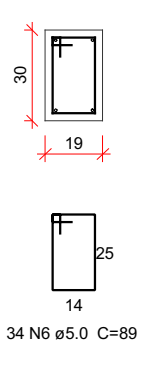
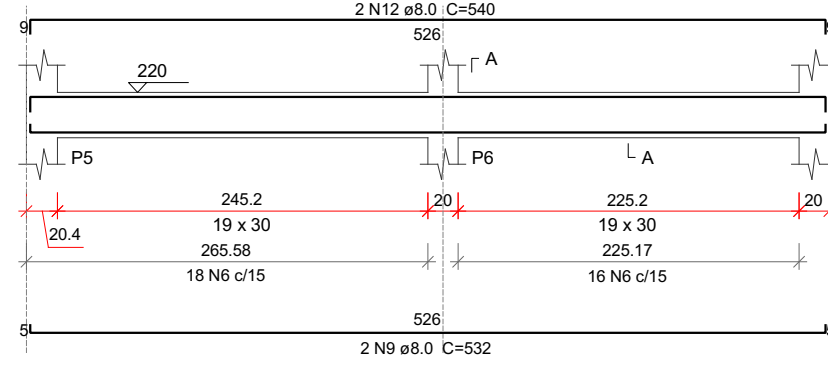
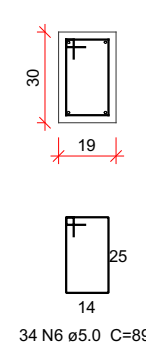
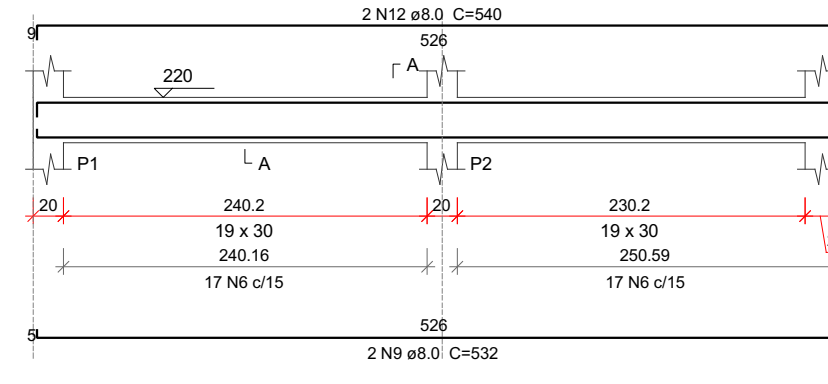
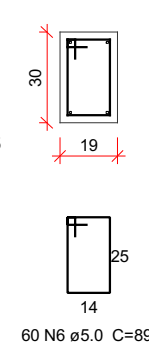
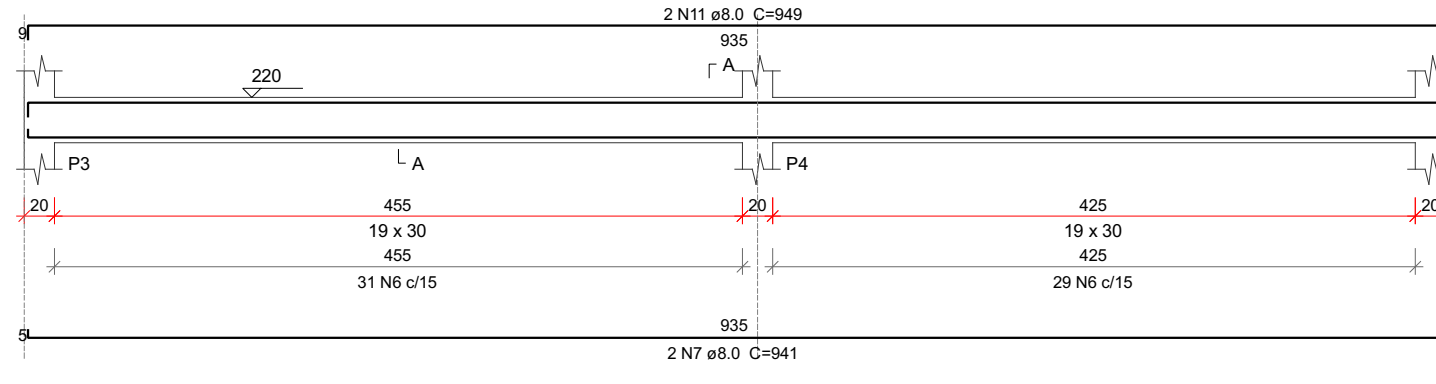
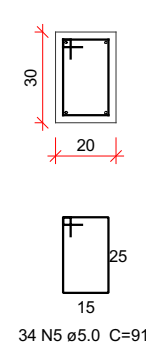
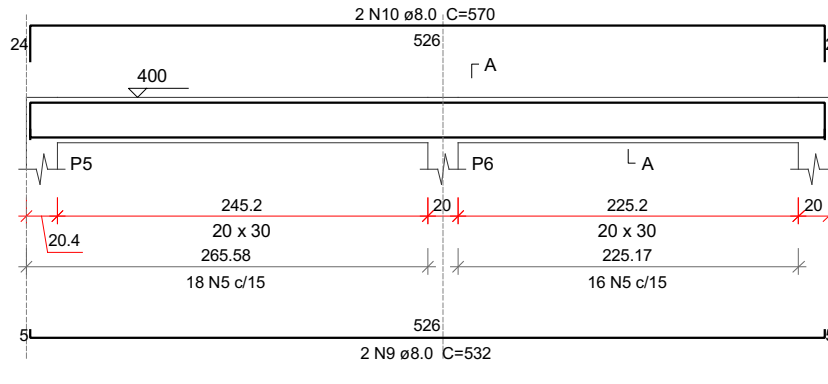
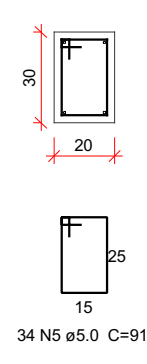
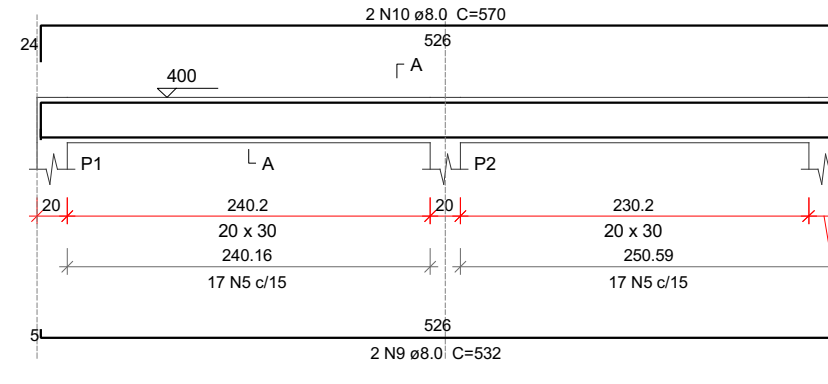
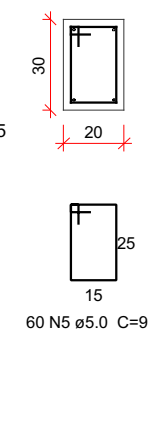
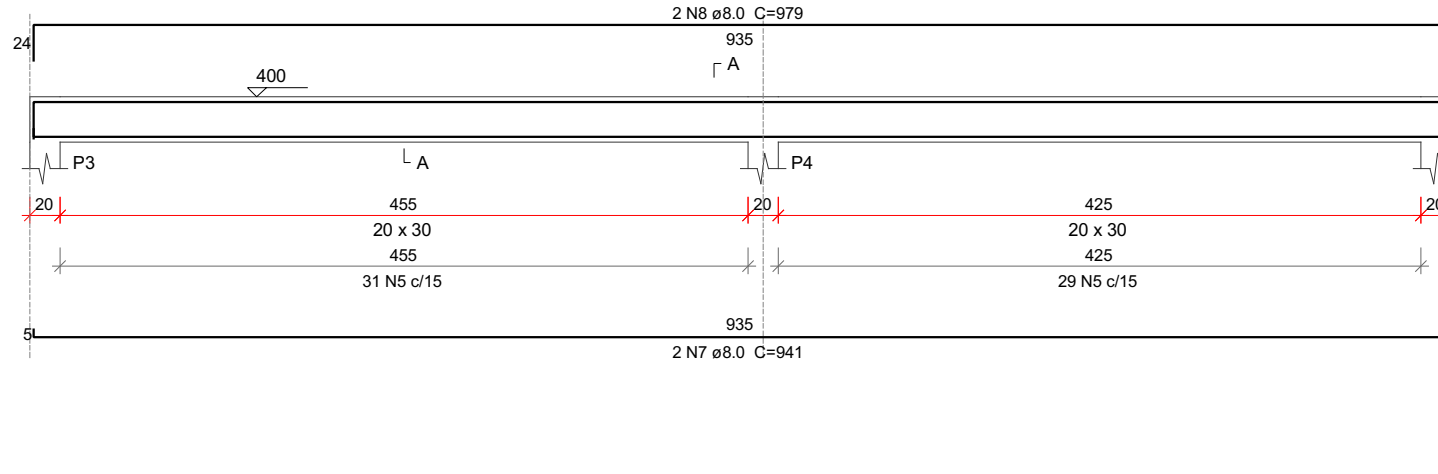
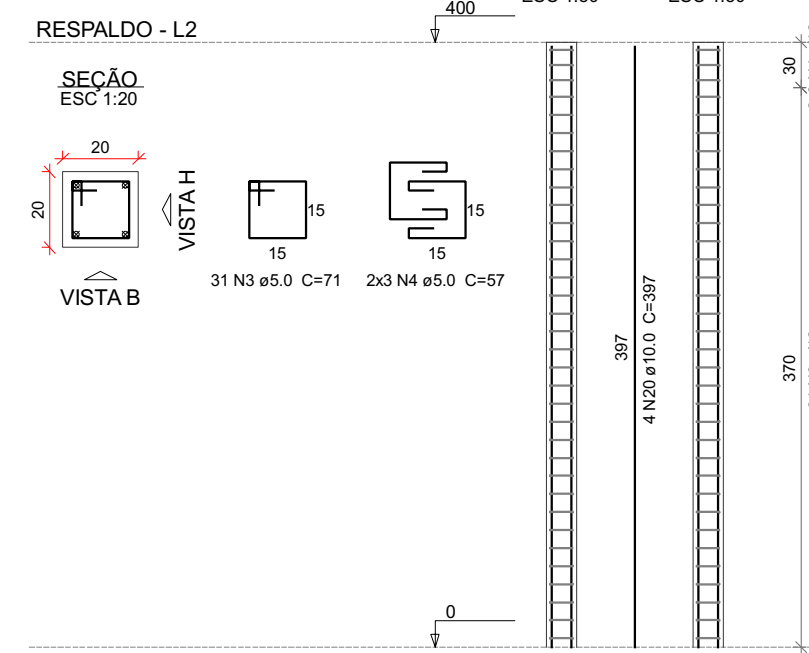


Relação do aço						
BALDRAME:	V-1.1				V-1.2	
	V-1.3					
RESPALDO:	7xP1				V-2.1	
	V-2.4				V-2.3	
	V-2.6				V-2.5	
AÇO	N	DIAM (mm)	QUANT	C.UNIT (m)	C.TOTAL	
CA60	1	5.0	117	107	12519	
	2	5.0	20	71	1420	
	3	5.0	217	71	15407	
	4	5.0	42	57	2394	
	5	5.0	128	91	11648	
CA50	6	5.0	128	89	11302	
	7	8.0	4	941	3764	
	8	8.0	2	979	1958	
	9	8.0	9	532	4756	
	10	8.0	4	570	2280	
	11	8.0	2	949	1980	
	12	8.0	4	949	2160	
	13	10.0	5	977	4885	
CORR	14	10.0	4	CORR	3656	
	15	10.0	198	137	27126	
	16	10.0	1	911	1520	
	17	10.0	2	100	200	
	18	10.0	8	578	4624	
	19	10.0	8	CORR	4120	
	20	10.0	28	397	1116	

### Resumo do aço

AÇO	DIAM (mm)	C. TOTAL (m)	PESO (kg)
CA50	8.0	163.2	64.4
	10.0	575.5	354.8
CA60	5.0	547.8	84.4
PESO TOTAL (kg)			
CA50		419.2	
CA60		84.4	

Volume de concreto (C-30) = 9,67 m<sup>3</sup>  
 Área de forma = 67,44 m<sup>2</sup>


$$P_1 = P_2 = P_3 = P_4 = P_5 = P_6 = P_7$$
[illegible]

	<p><b>E + Plan Engenharia Ltda Me</b></p> <p>CNPJ: 15.018.870/0001-65          Registro no CREA/SC: 127.622-8  <a href="http://www.emais.eng.br">www.emais.eng.br</a> - contato@emais.eng.br          Fone: (48)3093-9350          Rua Najla Carone Goedert, nº 1080 - Sala 1001/1002          Ed. City Office Square Passa Vinte - Palhoça - SC</p>		
			
<b>SERVIÇO SOCIAL DO COMÉRCIO</b> DEPARTAMENTO REGIONAL SANTA CATARINA			
Rua Felipe Schmidt, 785 – Centro – Florianópolis CEP: 88.010.002 – Fone/Fax: (48) 3251-4800 <a href="http://www-sc@sesc-sc.com.br">www-sc@sesc-sc.com.br</a>			
<i>Projeto</i>			
<h1 style="margin: 0;">ESTRUTURAL</h1>			
<i>Local</i>	QUADRA POLIESPORTIVA–SESC–CACUPÉ		
<i>End.</i>	Rodovia Haroldo Soares Glavim – 1670 – Cacupe... – Florianópolis – Santa Catarina		
<i>Obra</i>	QUADRA POLIESPORTIVA–SESC–CACUPÉ		
<i>Conteúdo</i>	Detalhamentos.		
<i>Proprietário</i>	SERVIÇO SOCIAL DO COMÉRCIO CNPJ 03.603.595/0001-68	<i>Resp. Técnico</i>	
<i>Consultor e Coordenador</i>		<i>Desenhista e Escalante</i>	
<i>Autor do Projeto</i>		<i>Franquia n°</i>	
Eng. Civil Dinei de Freitas Jacinto			
CREA/SC: 122.825-5			
<i>Assinatura</i>			
<i>Có-Autor do Projeto</i>			
<i>ITEM</i>	<i>Desenho</i>	<i>Escala</i>	<i>Data</i>
Estrutural	DILNEI	Indicada	AGO/2024

2
2  
*Total*